



**Jayadev Enterprise**



**COME & JOIN US  
IN MAKING EARTH  
A BETTER PLACE TO LIVE**



+91 90428 40666  
+91 90427 40666



[jayadeventerprise@gmail.com](mailto:jayadeventerprise@gmail.com)  
[www.jayadeventerprise.com](http://www.jayadeventerprise.com)



Mann Mandir, 2A, 1st Street,  
Annai Thangammal Nagar,  
Ganapathy, Coimbatore

# APLOMADO PRO

LED STREET LIGHT

Crompton

## **P**roduct Highlights



TOP MAINTAINABLE  
DRIVER  
COMPARTMENT



SLEEK  
AERODYNAMIC  
DESIGN  
with lower EPA rating





# APLOMADO PRO

LED STREET LIGHT

Crompton



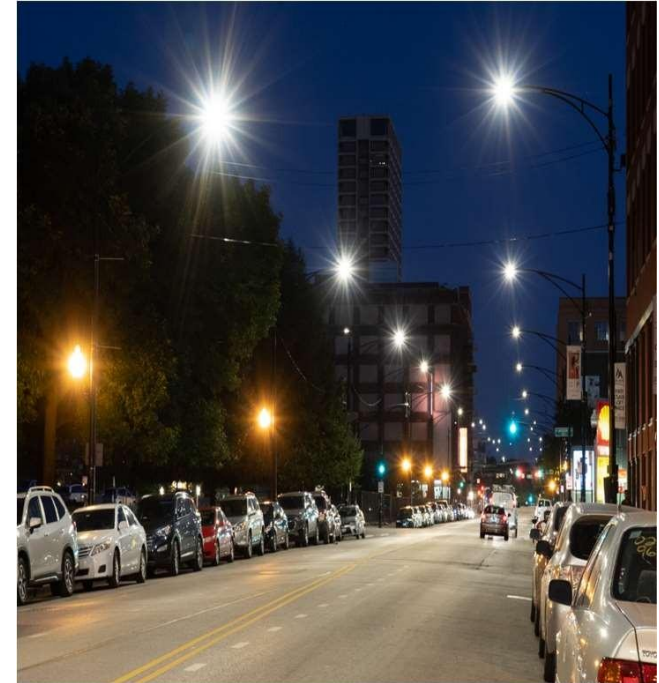
ersatile applications



Roads & Highways



Smart cities



City road lighting

# APLOMADO PRO

LED STREET LIGHT

Crompton

P

## Product specifications\_ Electrical



- **Potted driver:** BIS approved (IS 15885)
- Long lasting trouble free service life



### High surge protection :

- 4KV inbuilt + 10KV SPD

THD<10%

- PF > 0.95
- Electrical Class 1



- Wide input voltage range **100- 300V AC**
- Over voltage shut down for mains voltage > **320V** with auto-recovery feature



# APLOMADO PRO

LED STREET LIGHT

Crompton

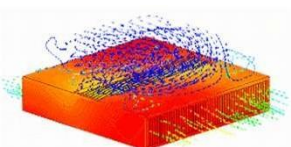
P

## Product specifications\_Mechanical



### Robust :

- Pressure die cast aluminium with excellent surface finish
- Crompton brand **EMBOSSING** for traceability till life
- Superior heat sink for better heat dissipation & Luminaire life
- **Toughened glass** with  $\geq 4\text{mm}$  thickness for better impact resistance
- **Impact Resistance**
- 5 impact of 2.0 Joules on each side



# APLOMADO PRO

LED STREET LIGHT

Crompton

P

## Product specifications\_ Photometric

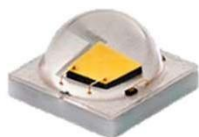


Efficacy :

>125LPW/ 135LPW

>145LPW (250/270W)

L70 life span : 50000 Hrs



High power Ceramic (1 to 3W)



CCT – 5665K  $\pm$ 355K (ANSI)/ 3045K  $\pm$ 175K (ANSI)

CRI  $\geq$  70

Secondary optics

- Peanut optics for throw & spread
- UV stabilised Non yellowing type





# APLOMADO PRO

LED STREET LIGHT

**Crompton**

U

nique features & benefits

## EFFICIENT HEAT MANAGEMENT

for improved luminaire life

## FUTURISTIC PRODUCT

for NHAI & smart cities

## REDUCTION OF TOTAL COST OF OWNERSHIP

Improved spacing between  
pole to pole



## IMPROVED OPTICAL EFFICIENCY

with more light on  
relevant areas

## LOWER EPA WIND RATINGS

and lower aerodynamic drag

## TROUBLE FREE EXTENDED LIFE

with BIS for electrical safety

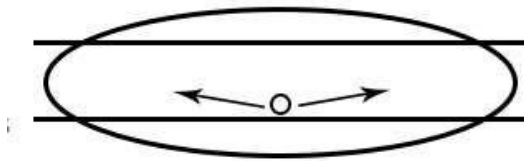
# APLOMADO PRO

LED STREET LIGHT

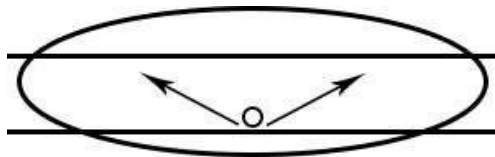
Crompton



## Unique features & benefits



**TYPE II – Citi Roads**



**TYPE III –  
Highway/Expressway**



### City road optics

- Unique optical distribution (Spread & Throw) for City roads
- Improved spacing between poles
- Better uniformity

### Highway road optics

- Unique optical distribution (Spread & Throw) for Highway roads
- Improved spacing between poles (33 – 40Meters)
- TCS, Flyover, Toll plaza
- Lower total cost of ownership with savings in associated costs (Pole, Cables, Feeder panel)



# APLOMADO PRO

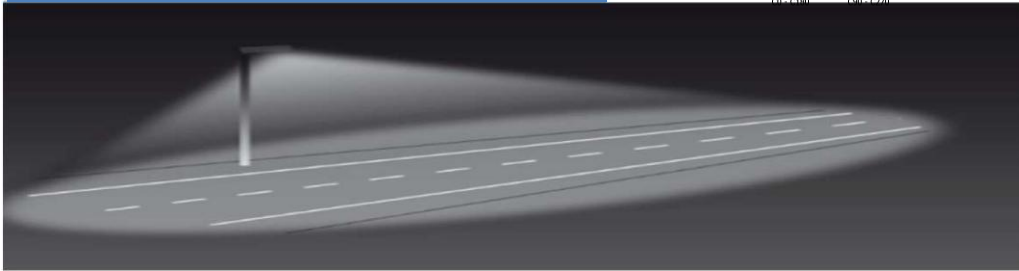
LED STREET LIGHT

Crompton

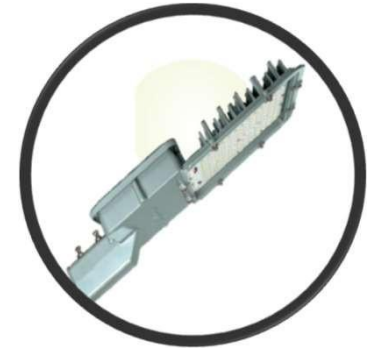
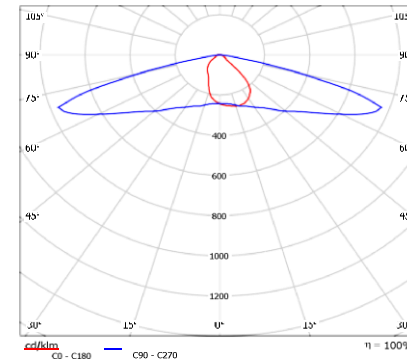
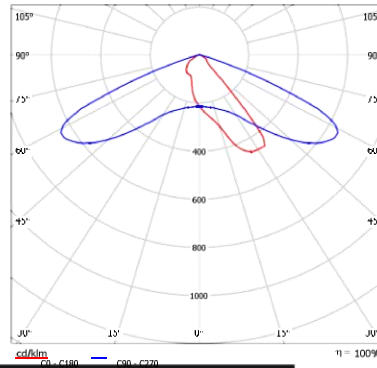
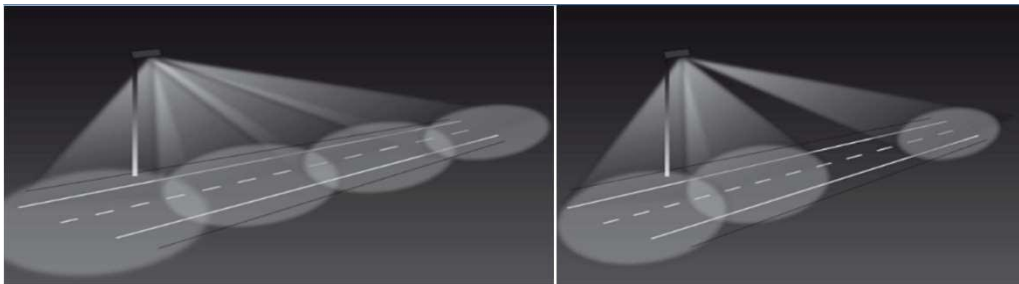


Unique features & benefits

Multi-layer Distribution with Peanut



Multiple spot with modules based LED street light



## Optimised lighting performance

- Flexible lumen packs (110/125/135/145LM/W) with dedicated optics
- No light trespass/ Pollution
- More light on the road, Improved energy savings
- Eliminates ZEBRA effect on roads
- Improved Longitudinal uniformity

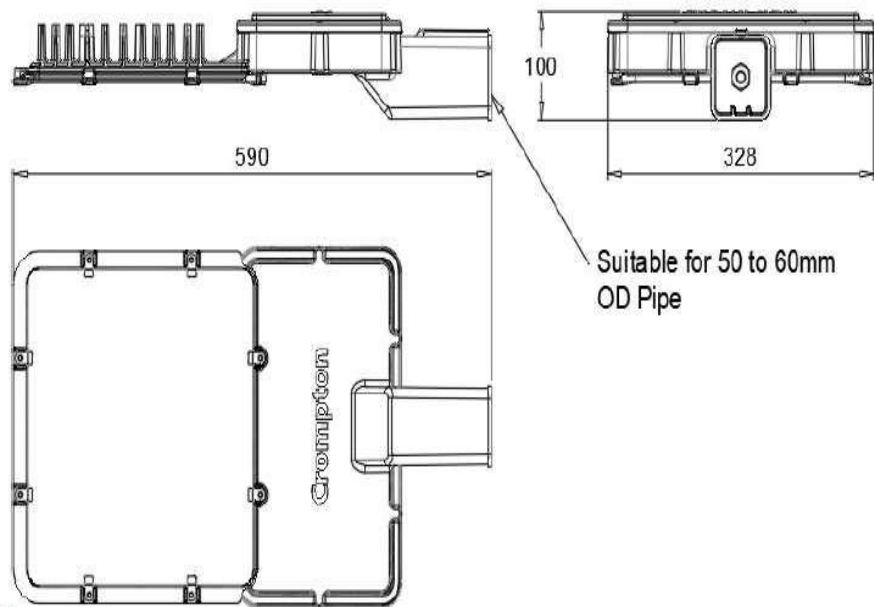
# APLOMADO PRO

LED STREET LIGHT

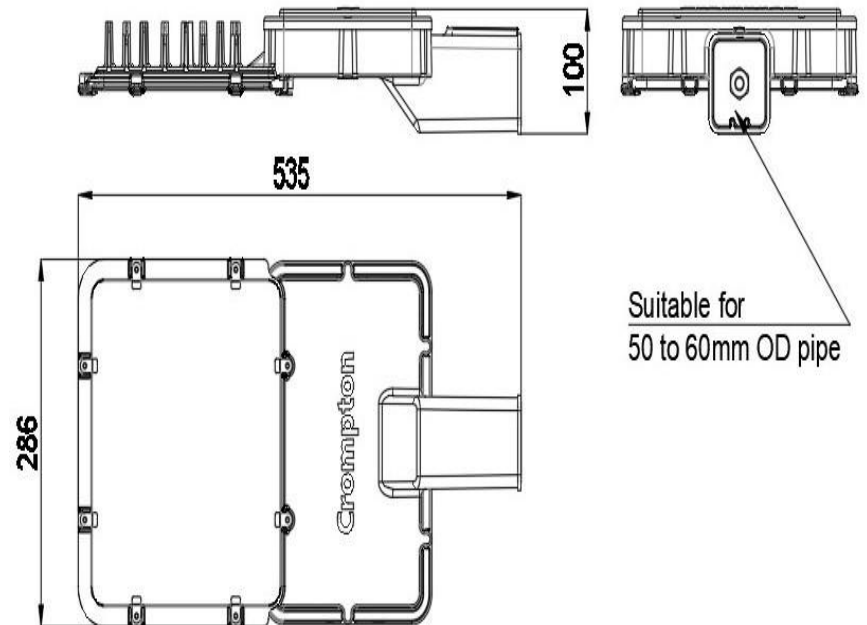
Crompton



## Product dimension



220W/250W



180W/200W

# APLOMADO PRO

## LED STREET LIGHT

**Crompton**

### Leaflet



**Crompton**

**Aplomado PRO**  
LED STREET LIGHT

**DELIVERING THE BEST PERFORMANCE AND LIGHTING SOLUTIONS**

**Aplomado PRO**  
LED STREET LIGHT

Aplomado Pro Street Luminaire comprises of aluminium die cast housing powder coated in silver grey and toughened glass fixed to the housing by means of clamp. Ideal for illuminating access roads and traffic routes. Its aerodynamic design which offers a highly efficient lighting solution. This is perfect streetlight solution to meet your requirements.



**EFFICIENT HEAT MANAGEMENT**  
for improved luminaire life

**FUTURISTIC PRODUCT**  
for NHAI & smart cities

**PROTECTION AGAINST**  
water jet and dust

**REDUCTION OF TOTAL COST OF OWNERSHIP**  
Improved spacing between pole to pole

**TROUBLE FREE EXTENDED LIFE**  
with BIS for electrical safety

**BETTER LIFE**  
and improved efficiency

**IMPROVED OPTICAL EFFICIENCY**  
with more light on relevant areas

**LOWER EPA WIND RATINGS**  
and lower aerodynamic drag

**MORE LIGHT**  
on relevant areas with less consumption

**FEATURES**

-  **PRESSURE DIE CAST HOUSING**
-  **SMD LEDs** for better light
-  **IP68** ingress Protection
-  **4KV** + 10KV SPD Surge Protection
-  **<10% THD** >0.95 PF
-  **SLEEK AERODYNAMIC DESIGN** with lower EPA rating
-  **TOP MAINTAINABLE DRIVER COMPARTMENT**




#### TECHNICAL SPECIFICATIONS

PRODUCT CODE	PRODUCT DESCRIPTION	NOMINAL** WATTAGE	VOLTAGE (V)	OPT %	MAINS** CURRENT(A)	APPROX.* WT. (kg)
CLRA01002-A1	OSP-416-200-57-HL2-GL-HB-NR	220W	340	5700 AKH2	0.964	5.90
CLRA01004-A1	OSP-416-220-57-HL3-GL-HB-NR	220W	340	5700 AKH2	0.964	5.90
CLRA01005-A1	OSP-416-250-57-HL3-GL-HB-NR	250W	340	5700 AKH2	1.100	6.30
CLRA01006-A1	OSP-416-250-57-HL3-GL-HB-NR	250W	340	5700 AKH2	1.100	6.30
CLRA01010-A1	OSP-416-180-57-HL2-GL-HB-NR	180W	340	5700 AKH2	0.789	5.00
CLRA01011-A1	OSP-416-200-57-HL2-GL-HB-NR	200W	340	5700 AKH2	0.877	5.00
CLRA01012-A1	OSP-416-180-57-HL3-GL-HB-NR	180W	340	5700 AKH2	0.789	5.00
CLRA01013-A1	OSP-416-200-57-HL3-GL-HB-NR	200W	340	5700 AKH2	0.877	5.00

\* Only for electrical/mechanical design consideration  
\*\* Based on system voltage and current will have tolerance as per IS 16104:2012

#### LINE DIAGRAM



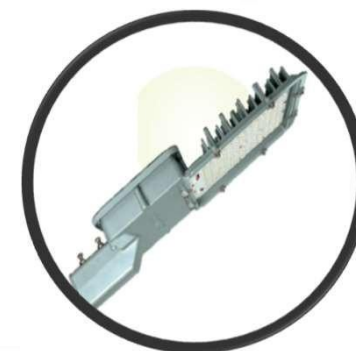
# APLOMADO PRO

LED STEET LIGHT

Crompton

P

## Product description & ordering codes



PRODUCT CODE	PRODUCT DESCRIPTION	NOMINAL** WATTAGE	VOLTAGE (V)	CCT °K	MAINS** CURRENT(A)	APPROX.* WT. (Kg)
CLR401002-A1	CRP-416-220-57-HL2-GL-HR-NSR	220W	240	5700 ANSI	0.964	6.00
CLR401004-A1	CRP-416-220-57-HL3-GL-HR-NSR	220W	240	5700 ANSI	0.964	6.00
CLR401003-A1	CRP-416-250-57-HL2-GL-HR-NSR	250W	240	5700 ANSI	1.100	6.30
CLR401005-A1	CRP-416-250-57-HL3-GL-HR-NSR	250W	240	5700 ANSI	1.100	6.30
CLR401010-A1	CRP-418-180-57-HL2-GL-HR-NSR	180W	240	5700 ANSI	0.789	5.00
CLR401011-A1	CRP-418-200-57-HL2-GL-HR-NSR	200W	240	5700 ANSI	0.877	5.00
CLR401012-A1	CRP-418-180-57-HL3-GL-HR-NSR	180W	240	5700 ANSI	0.789	5.00
CLR401013-A1	CRP-418-200-57-HL3-GL-HR-NSR	200W	240	5700 ANSI	0.877	5.00



# THANK YOU!

## HOW CAN YOU BE A PART OF US ?

An Environmentally-friendly alternative is now our friend. Along with Jayadev, small solutions can later become a revolution to society. Team Jayadev is now much stronger by having you on board. Together, we can save Mother Nature little by little, come on!

## GET IN TOUCH



+91 90428 40666  
+91 90427 40666



[jayadeventerprise@gmail.com](mailto:jayadeventerprise@gmail.com)  
[www.jayadeventerprise.com](http://www.jayadeventerprise.com)



Mann Mandir, 2A, 1st Street,  
Annai Thangammal Nagar,  
Ganapathy, Coimbatore

